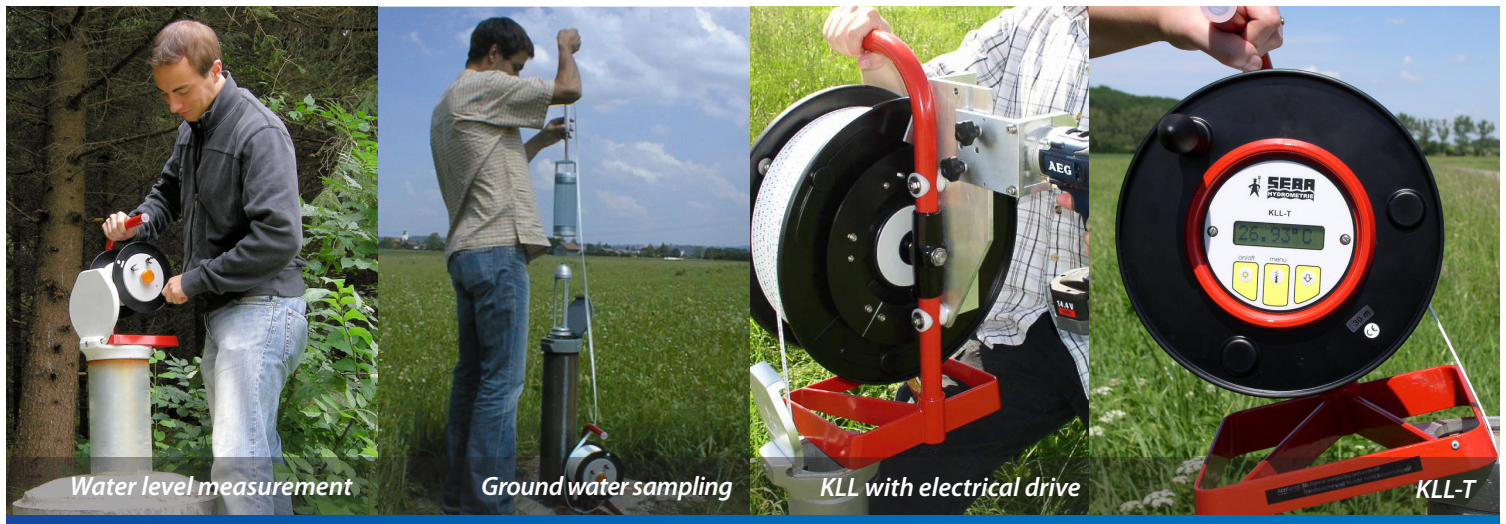




Electric Contact Meters Type KLL / KLL-T / KLL-Mini and TLG

Easy groundwater level and temperature measurement

- Measuring of water level and total depth for groundwater
- Quick and digitale temperature indication (LC-Display)
- Optical and acoustical signal when probe touches water level
- Low power consumption

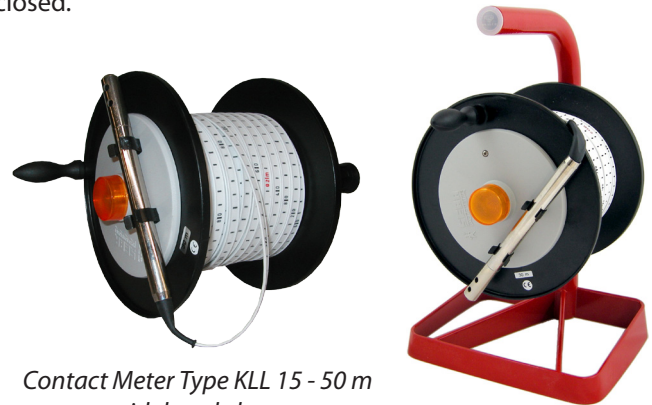


Contact Meter Type KLL Principle of function

The SEBA-Electric Contact Meter type KLL is a portable, reliable instrument for measuring the water level and total depth in boreholes, wells, reservoirs etc.

For the measurement the probe is lowered to the water level. When touching the level, a sensor effects the illumination of a signal lamp. On request, an additional acoustic signal will be released by a buzzer. The depth is shown on the cable in metres and centimetres. If the measurement of water level and total depth is desired, an additional ground sensor (see accessories) is adaptable. When the sensor is touching the bottom, the signal lamp is switched off. In case of very small diameter tubes, instruments with a probe of 10 mm dia. (not suitable for ground-sensor and sensor-cap) are available.

When the probe is touching the water-level there is a conductive connection between the tip of the probe and the sensor-body. Thereby a circuit of the lamp and the buzzer will be closed.



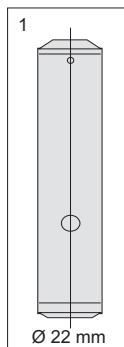
Contact Meter Type KLL 15 - 50 m
with hand-drum

Contact Meter Type KLL
15-1000 m with support frame

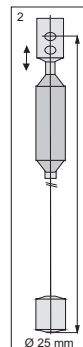
Accessories



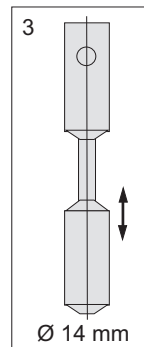
KLL with electrical drive



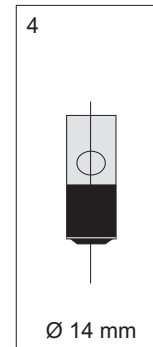
sensor for high
resp. non
conducting
liquids



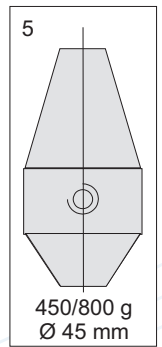
ground-sensor
with steel cable
for muddy
bottom



ground-sensor



sensor cap
for salty water



additional
weight

Technical Data KLL

Cable:	Polyethylene with 2 steel cores (anticorrosiv), metric scale, figures printed all metres in red colour and decimetres with centimetres in black colour
Probe:	standard version: made of corrosion resisting material, 14 mm dia., 175 mm long with build-in electrode special version: 10 mm dia., 175 mm long
Cable drum:	plastic, impact and temperature resistant
Power supply:	6 V DC, 4 Baby Cells each 1.5 V

Accuracy:	< 1 cm with cable length 100 m
Supporting frame:	aluminium, formed parts, surface coated
Measuring ranges and weights:	
15 m: 1.4 kg; 2.0 kg*	100 m: 3.6 kg*
30 m: 1.6 kg; 2.2 kg*	150 m: 4.9 kg*
50 m: 1.9 kg; 2.5 kg*	200 m: 5.5 kg*
80 m: 3.3 kg*	300 m: 8.4 kg*
*) with support frame. On request, special ranges up to 1000m are available.	

Contact Meter Type KLL-T

The SEBA-KLL-T has been developed for accurate measurements of water level and temperature in groundwater observation tubes and wells.

Offering quick indication of the temperature, the instrument is suitable for the determination of temperature profiles.



Principle of function

Water level measurement:

Dipping into a fluid, a conducting connection between the probe head and the probe body is being established. This completes the circuit of the bulb and the buzzer.



Temperature measurement:

The temperature is measured with a semi-conductor sensor and transformed into proportional current. Through an A/D-transformer the analogue value is transformed into a digital value and indicated on an 3.5 digit LCD-display.

carrying bag for KLL-T

Technical Data KLL-T

Cable:	6-core round cable Ø 5 with cm graduation and dm numbering Material: Polyurethane (PUR)
Power supply:	6 V C (4 batteries baby-cells 1,5 V)
Actual operation time with one set of battery:	approx. 1000 hours, with back-light 50 hours
Accuracy temperature:	0.10 °C ± 1/2 digit (range 0-25 °C) 0.15 °C ± 1/2 digit (range 0-50 °C)
Indication temperature::	°C, Fahrenheit (setup in menu)
Accuracy probe:	1 cm at 30 m cable length
Measuring ranges:	30 m, 50 m, 80 m, 100 m, 150 m, 200 m, 300 m
Display:	in one row, 8 digits, contrast temperature controlled
Languages:	German, English, French, Spanish (setup through menu)
Operating temperature:	- 15 °C up to 50 °C
Storage temperature:	- 40 °C up to 80 °C

Protection drum/probe:	IP 52 / IP 68
Probe:	made of non-corrosive material, 16 mm Ø
Supporting frame:	aluminium, formed parts, surface coated
Cable drum:	plastic, impact and temperature resistant
Dimensions:	220 x 350 x 330, 280 x 415 x 330, 400 x 570 x 330 (width x height x depth, mm)
Weight:	depends on the cable length, e.g. instrument with 30 m cable weighs approx. 5.5 kg
Conductivity:	range 1: 20 - 200 µS/cm, range 2: 200 - 2mS/cm, range 3: 2 - 20mS/cm, range 4: 20 - 50mS/cm This electric contact meter can be used for a rough measurement of conductivity. An exact measurement can be done with the SEBA electric contact meter type KLL-Q .

Contact-Meter Type KLL-Mini

With the KLL-Mini a full contact-meter in pocket-format has been developed. In quality regards it's equivalent to the existing KLL-family. Generally it is equipped with optical and acoustic signal, which enables the exact measurement of the water level. The two 1.5 V batteries are sufficient for approx. 250 measurements.

For convenient transport and safe storage a protection bag is available, made of textile with zip, carrying strap and belt loop.



*Power in the pocket: small,
light, easy to handle and precise*

carrying bag for KLL-Mini

Technical Data KLL-Mini

Cable:	2-core flat cable, polyethylene with V2A-leads, black cm-division with dm-figures and red m-marking
Probe:	made of non-corrosive material, 14 mm Ø, 120 mm long, with built-in electrode
Drum:	plastic, impact and temperature resistant

Power supply:	3 VDC, 2 standard batteries 1.5 V (baby cells) Please use leakproofed batteries only!
Accuracy:	< 1 cm
Measuring range/weights:	10 m/550 g, 15 m/600 g
Dimension:	Ø140 mm

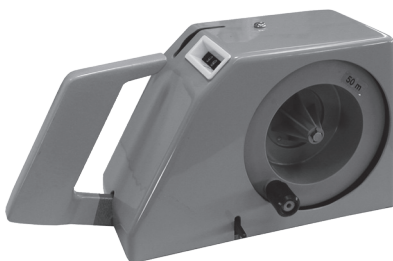
Depth Indicator Type TLG

The SEBA-Depth Indicator Type TLG has been developed as a portable unit for rapide and accurate observation of bore hole water levels. It also can be used for measurements in the open sea or for measurements of the cross section of a lake.

Operated manually by holding above the bore hole it provides a clear, instantaneous indication on a five figure counter calibrated in metres and centimetres and is rapidly rewound.

Advantages:

- mech. measuring system
- rapide and accurate measurements
- digital indication of the measuring result
- handy and portable
- light in weight and compact design



Technical Data TLG

Measuring ranges:	50, 100 and 200 m
Bobs	20 mm and 40 mm dia. of plastic for water-level indication; 20 mm dia of metal for depth sounding
Cable control:	constant, due to stable centrifugal brake
Steel wire:	0.5 mm dia. stainless, stretch- and acidproof
Indication:	5 digit indication in metres and centimetres
Dimensions:	250 x 120 x 8 (mm, height x width x depth)
Weight:	1 kg

The right is reserved to change or amend the foregoing technical specification without prior notice.

Contact:

Virtual Hydromet | vhydromet@yahoo.com | +91-9412072697